



SYGNATURE  
AWARD



# Sygnature Award

Awaken consciousness.

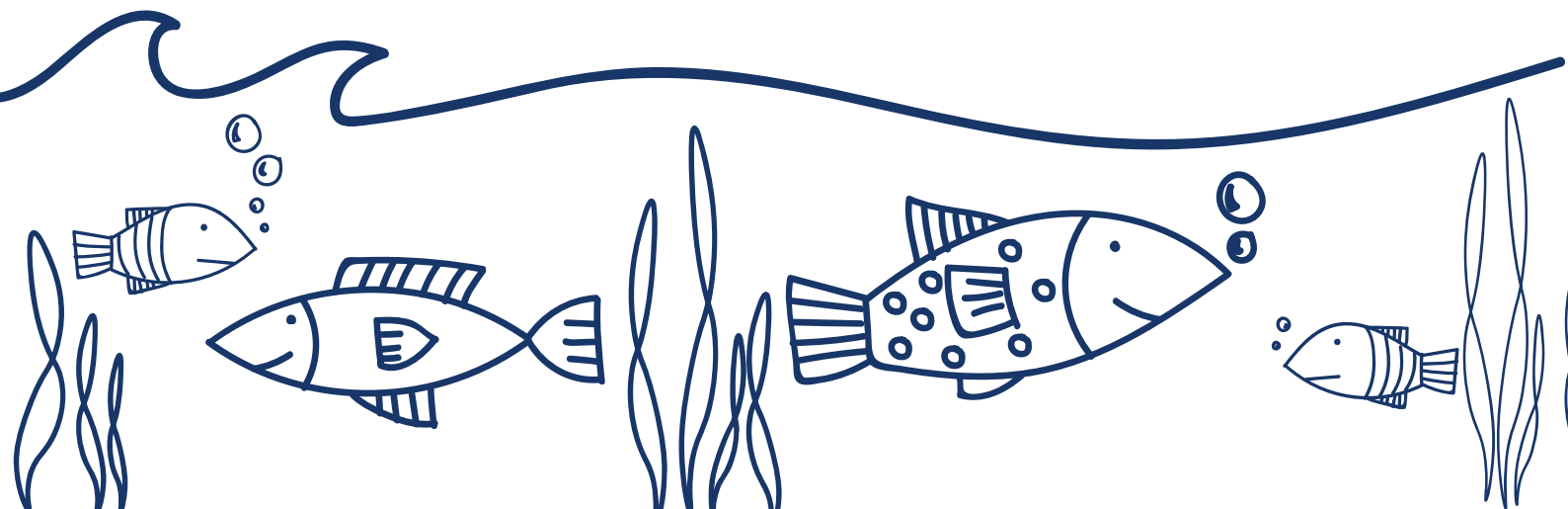
Nurture confidence.

Encourage intentional citizenship action.



**Imagine if the young people across the world demanding change for a better future for our planet were empowered with the knowledge, skills and action-related strategies to become the sustainable, compassionate leaders of tomorrow...**

**[www.routes2resilience.org](http://www.routes2resilience.org) .uk  
[info@routes2resilience.org](mailto:info@routes2resilience.org)  
UK: +44 7401 179 233  
South Africa: +27 82 463 0222**





SYGNATURE  
AWARD

## The Sygnature Award

*Awaken consciousness, nurture confidence and encourage intentional citizenship action*

Routes to Resilience created the Sygnature Award in collaboration with the Impact Trust and the Cambridge Institute for Sustainable Leadership in South Africa (CISL-SA) to inform, inspire and ignite young people to develop the literacies, skills, mindset and competencies they need to act as catalysts for resilient futures and drive sustainable change.

The Award promotes environmental literacy and mastery of the action strategies and skills needed for taking effective action to drive sustainable change. Participation develops:

- An experiential understanding of the interconnectedness of our world and its ecosystems, and an appreciation of the importance of considering systems interactions and complexity.
- A deep understanding of the key concepts in sustainability and an appreciation of interactions between competing activities and trade-offs in decision-making.
- The ability to think critically, communicate clearly and respond creatively with solutions that address often competing demands.
- A view of themselves as an integral and active part of society able to apply social critical thinking to solution-seeking, and master action competence in influencing and enabling change in their world.
- The potential to 'future-proof' their life and career decisions by building resilience, flexibility and grit to adapt to evolving emergent futures.
- The opportunity to 'pay it forward' by committing to leadership action in their communities through mentored individual or group social action projects driving positive change.

Based on a head (think), heart (feel), hand (do) model, the programme consists of three components – Knowledge & Skill, Experience, and Effective Action. These components are designed to build upon one another and work best when done in sequence, fulfilling the Award itself. While the Skills component can be taken as a standalone, the Experience and Action components depend on the knowledge and competencies developed during the Skills component.

The result is young people with the resilience to live better, connected lives, and the ability to nurture the same in others.





## Sygnature Skills

### What:

The Sygnature Skills component imparts a deep understanding and knowledge of the concepts and principles of sustainability, systems thinking and complexity theory. Participants develop core skills including critical thinking, complex problem-solving, creativity, communication and collaboration.

### Outcome:

Learners leave the Sygnature Skills course with a deep understanding of the principles underlying complexity and social and environmental sustainability, as well as valuable skills for the 21st century workplace.

### Format:

Sygnature Skills takes the form of a series of workshops, interactive seminar discussions and immersive outdoor learning journeys, with around 80 hours of face-to-face contact, mentorship and online sessions.





SYGNATURE  
EXPERIENCE

## Sygnature Experience

### What:

The Sygnature Experience is a learning journey which helps participants develop a deep experiential understanding of important concepts underpinning sustainability and systems-thinking through real-world knowledge and place-based learning. These encounters use nature, culture and history to explore interconnectedness, feedback loops, circularity and biomimicry, and create empathy by renewing connections with nature.

### Outcome:

Learners appreciate their role and place in the biosphere, and familiarise themselves with the interconnectedness of the natural environment and social and economic systems.

### Format:

A residential experience hosted in settings of incredible natural beauty, where participants can experience the principles of sustainability and circularity in action. This sustainability learning journey draws on the carefully chosen, beautiful surroundings as a real-world example of sustainability leadership in practice. The introductory and advanced experiences take place over three and six days respectively.





## Sygnature Action

### What:

Participants identify their passion and purpose and learn how to plan and take effective action around a challenge or problem they have identified in their communities. Mentors support them as they master competencies, planning and strategic knowledge so they can put the skills and principles they have learned – and their ideas – into practice. The goal is for the participants' initiatives to evolve into youth-led community enterprises with a sustainable income model, igniting a lifetime of sustainable leadership!

### Outcome:

Learners develop strategic knowledge, understanding and competency in performing skills in practice and create a portfolio of evidence that they can use to develop their careers.

### Format:

Groups, formed at the start of the programme, meet with their mentors every two weeks to keep momentum, overcome hurdles, develop their project management skills and strengthen team cohesion. The programme runs over five to six months.





SYGNATURE  
AWARD

## About Routes to Resilience

*Igniting Catalysts for Sustainable Futures*

Our world is changing rapidly, and with it the skills and knowledge needed to live in a way that will help us thrive into a long future. Routes to Resilience is a known provider of learning programmes and experiential encounters that help develop a resilience mindset. Our vision is to awaken active citizens and help them to develop a deep understanding of the interconnectedness between people and planet by ensuring they have the knowledge and tools to make sustainable life and career choices.

### How do we do it?

Our programmes feature engaging, inspiring and interactive seminars, real-world experiences and encounters with nature, all developed in collaboration with leading sustainability experts. The programmes are tailored towards three groups with a key role to play for a more sustainable future:

- **Educators:** helping teachers and lecturers develop a sustainability mindset and integrate sustainability principles into their classroom practice and curriculum content.
- **Young people:** empowering children and adolescents with the knowledge, skills and action-related strategies they need to become the compassionate, sustainable leaders of tomorrow.
- **Young professionals:** enabling workers to drive sustainable excellence within their businesses and build purpose-led teams that foster sustainability and resilience.

No matter how they engage with us, we want all our participants to walk away from our programmes with a secure knowledge of sustainability principles, excited about their purpose and potential to drive change, confident in their personal leadership capacity and inspired to take action and drive positive impact.



[www.routes2resilience.org](http://www.routes2resilience.org)



## About the Impact Trust

The Impact Trust is a public benefit research and advocacy organisation that works with companies, schools, governments, academia and civil society to address and promote sustainable development and sustainable livelihood practices. We do this by identifying an understanding the gaps in programmes, strategies, policies or practice and then either designing adjacent possibilities or redesigning new systems approaches. We follow up by advocating for change that will move the need towards sustainability in practice.

Routes to Resilience was established as an initiative of the Impact Trust, designed and developed in collaboration with Cambridge Institute for Sustainability Leadership (SA) in 2014. Our objective was to provide young people with the earliest opportunity to engage in understanding the principles of sustainability, complexity and new design thinking to better prepare them for a rapidly changing world.



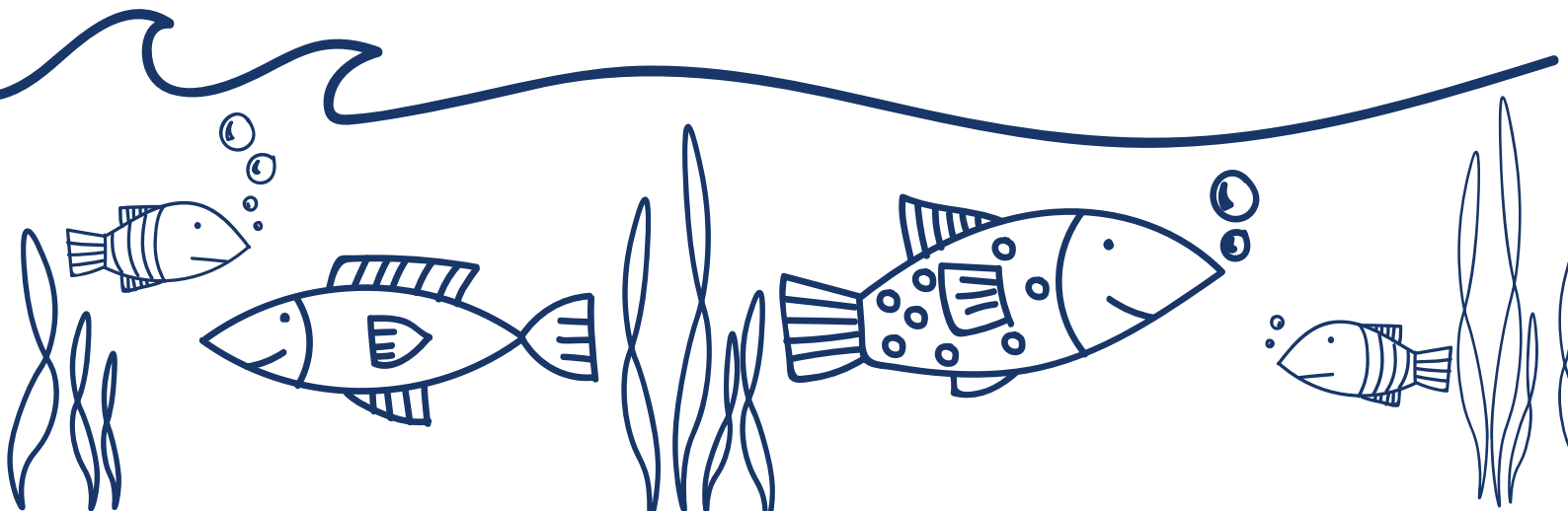
[www.impacttrust.org.uk](http://www.impacttrust.org.uk)

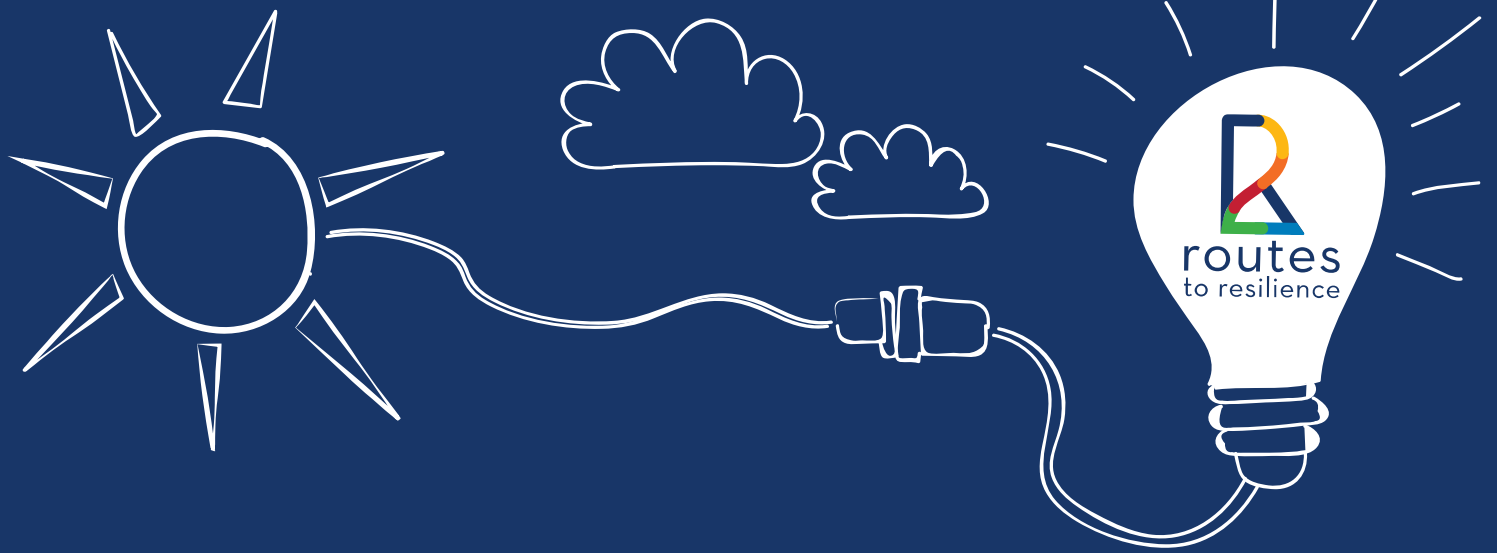


We would be delighted to discuss with you how you can implement the Sygnature Award programme into your school or institution: please feel free to get in touch!

[www.sygnatureaward.com](http://www.sygnatureaward.com)

[www.routes2resilience.org](http://www.routes2resilience.org)  
[info@routes2resilience.org](mailto:info@routes2resilience.org)





[www.routes2resilience.org.uk](http://www.routes2resilience.org.uk)

